

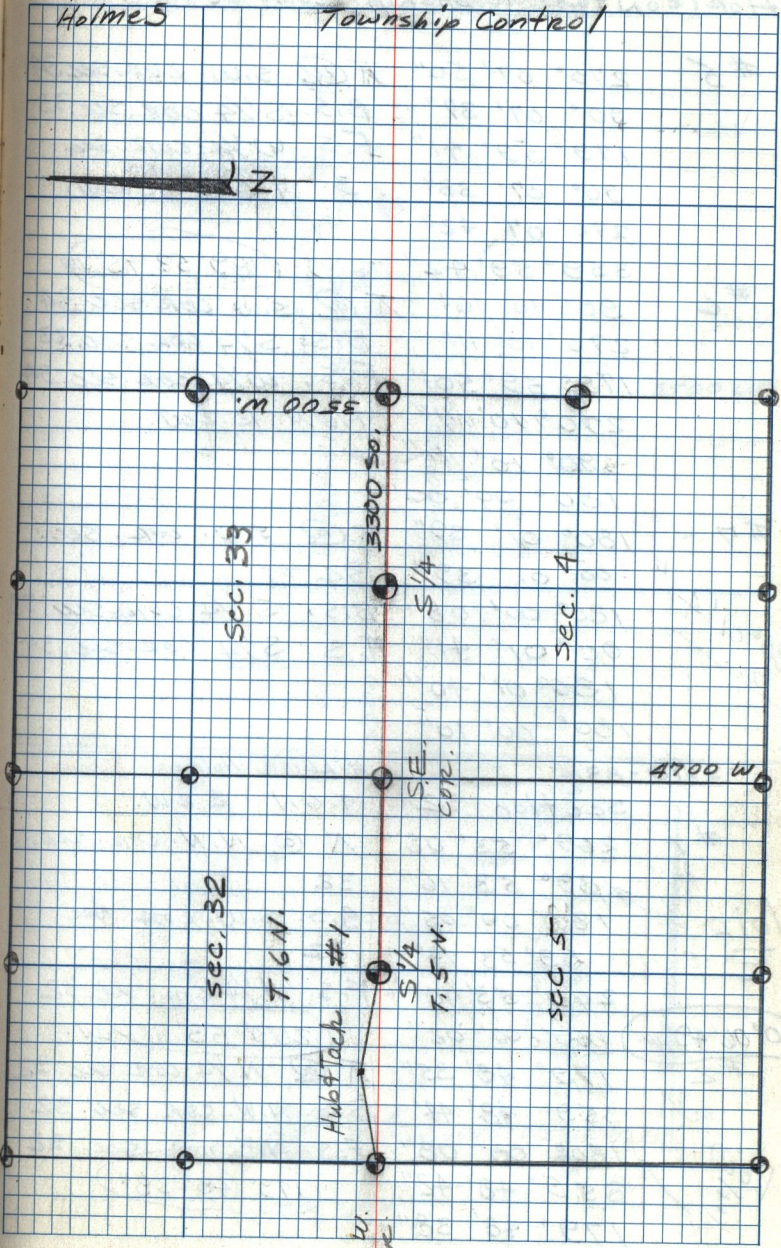
3-9-83

HILLIER
HalmeS

T.6 N.
R.2 W.

MC 53-311

Township Control



3500 W

Sec. 33

3300 S.

S 1/4

Sec. 4

4700 W

S.E. COR.

Sec. 32

T.6 N.

Hub # Tach #1

S 1/4

T.5 N.

Sec. 5

S.W. COR.